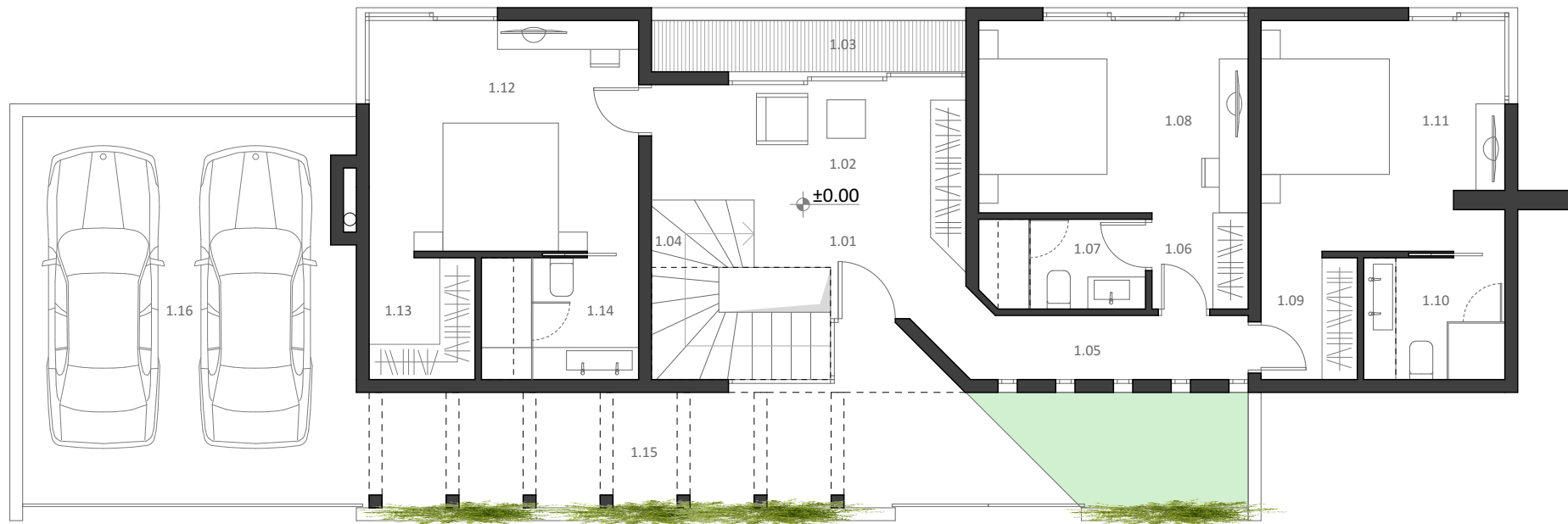


540 1,810
 20 520 20 420 20 490 20 420 20 380 20

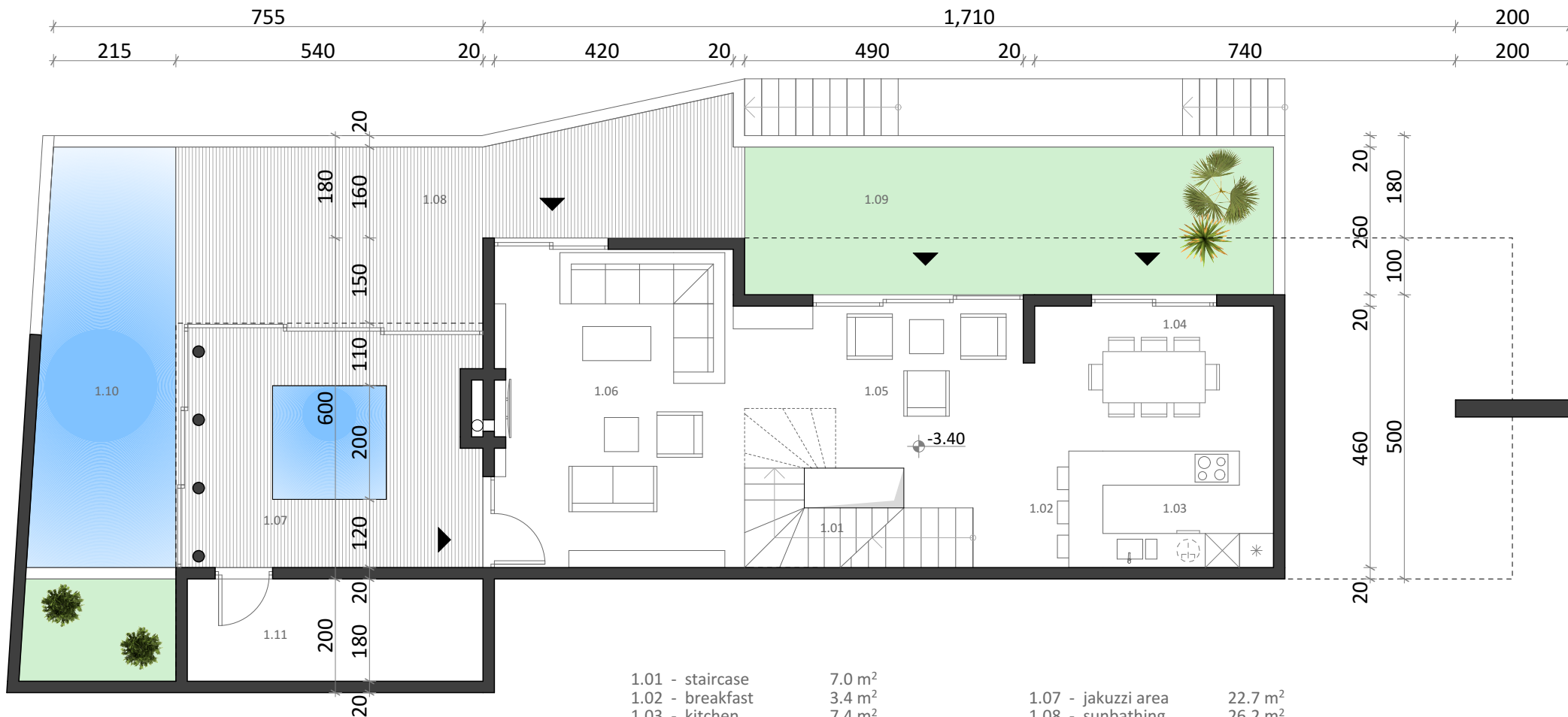
150
 20
 630



20
 560
 600
 20
 200
 200

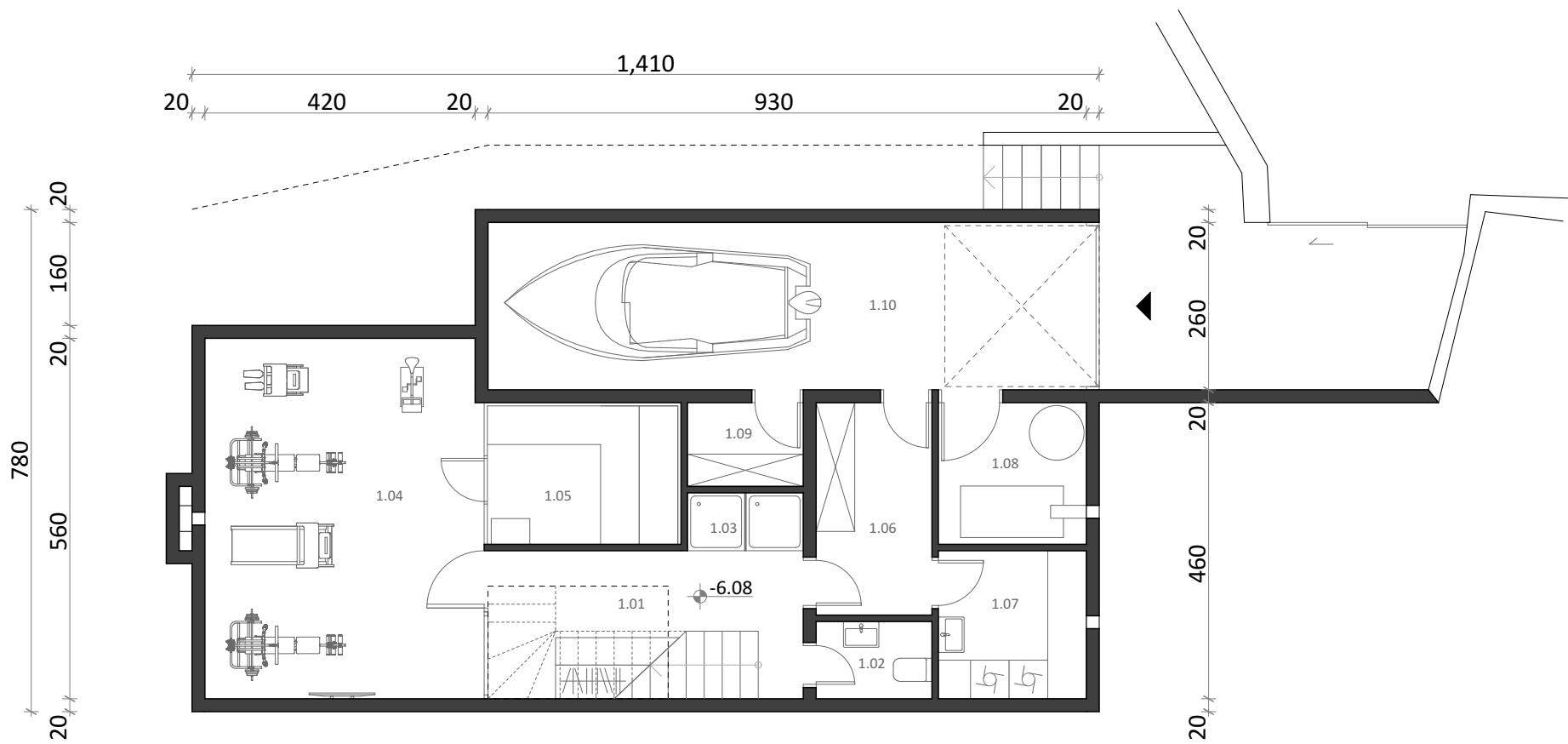
1.01 - entrance hall	4.9 m ²	1.08 - bedroom	12.6 m ²	1.15 - entrance path	18.7 m ²
1.02 - viewpoint	8.8 m ²	1.09 - dressing room	2.9 m ²	1.16 - parking space	31.2 m ²
1.03 - terrace	4.0 m ²	1.10 - bathroom	4.2 m ²	courtyard area	49.9 m ²
1.04 - staircase	6.6 m ²	1.11 - bedroom	13.4 m ²		
1.05 - corridor	5.1 m ²	1.12 - bedroom	15.1 m ²		
1.06 - dressing room	3.0 m ²	1.13 - dressing room	3.2 m ²		
1.07 - bathroom	4.4 m ²	1.14 - bathroom	4.6 m ²		
		NET area	92.8 m ²		
		GROSS area	107.8 m ²		





1.01 - staircase	7.0 m ²	1.07 - jacuzzi area	22.7 m ²
1.02 - breakfast	3.4 m ²	1.08 - sunbathing	26.2 m ²
1.03 - kitchen	7.4 m ²	1.09 - grassy area	24.2 m ²
1.04 - dining room	10.7 m ²	1.10 - swimming pool	17.7 m ²
1.05 - afternoon tea	14.0 m ²	1.11 - goods shed	9.4 m ²
1.06 - living room	24.2 m ²		
NET area	66.7 m ²	courtyard area	90.8 m ²
GROSS area	75.7 m ²		

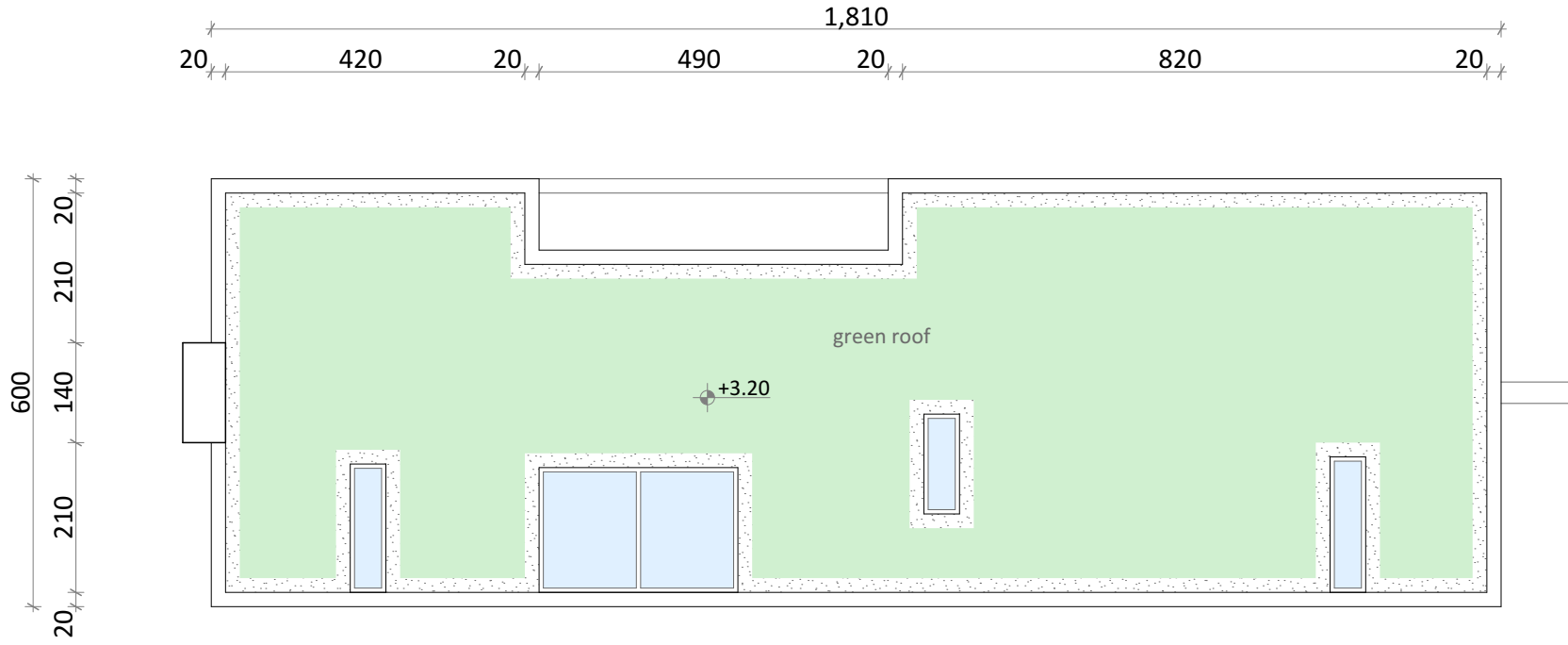


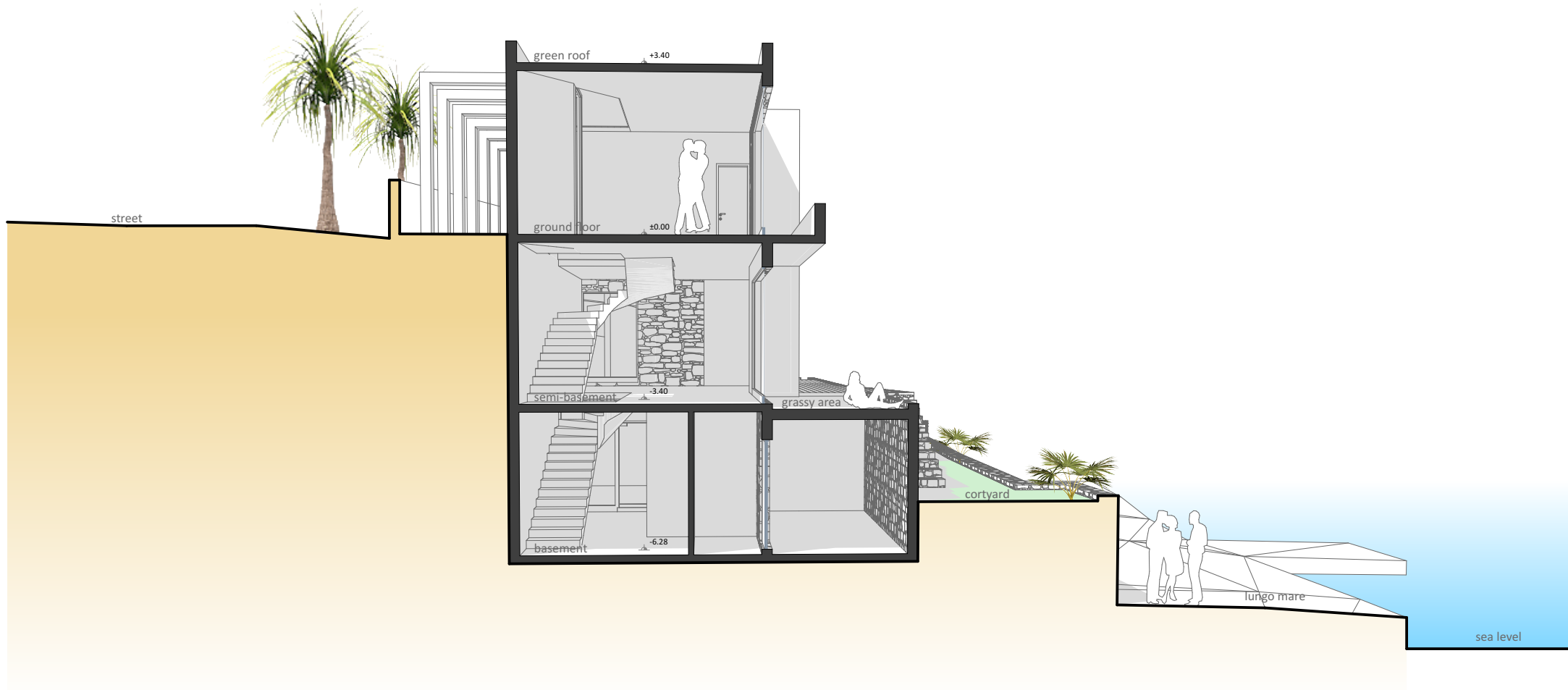


1.01 - hall/wardrobe	11.3 m ²	1.06 - goods room	5.9 m ²
1.02 - toilet	2.2 m ²	1.07 - laundry	5.3 m ²
1.03 - showers	1.6 m ²	1.08 - central radiator	5.1 m ²
1.04 - fitness	24.2 m ²	1.09 - pantry	2.3 m ²
1.05 - sauna	6.7 m ²	1.10 - garage for boat	24.2 m ²
		NET area	88.8 m ²
		GROSS area	102.6 m ²

NET villa	248.3 m ²
GROSS villa	286.1 m ²







Designer
Milan Milić, grad.eng.arch.

Project
Tourist villa in Krašići

Plan
Cross section

Scale